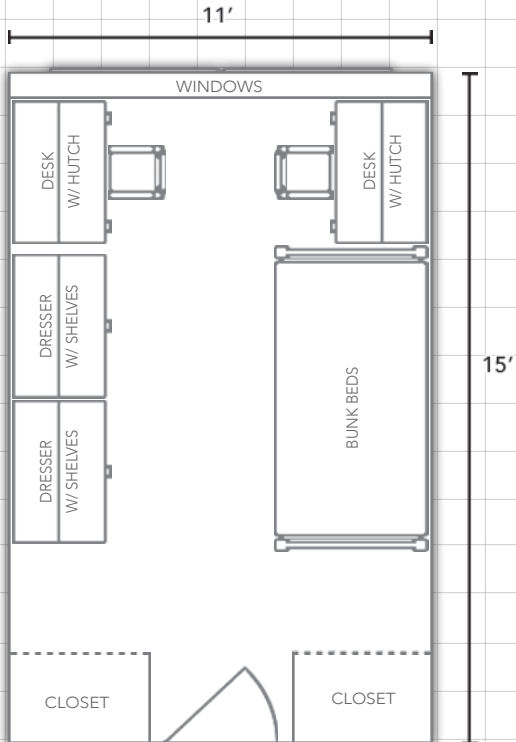


LAWSON HALL

Information available at WWW.EIU.EDU/HOUSING

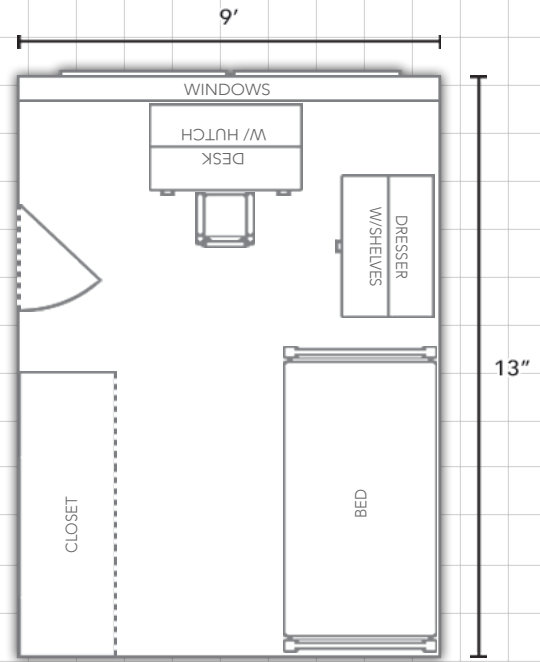


Double Room:



Physical Single Room:

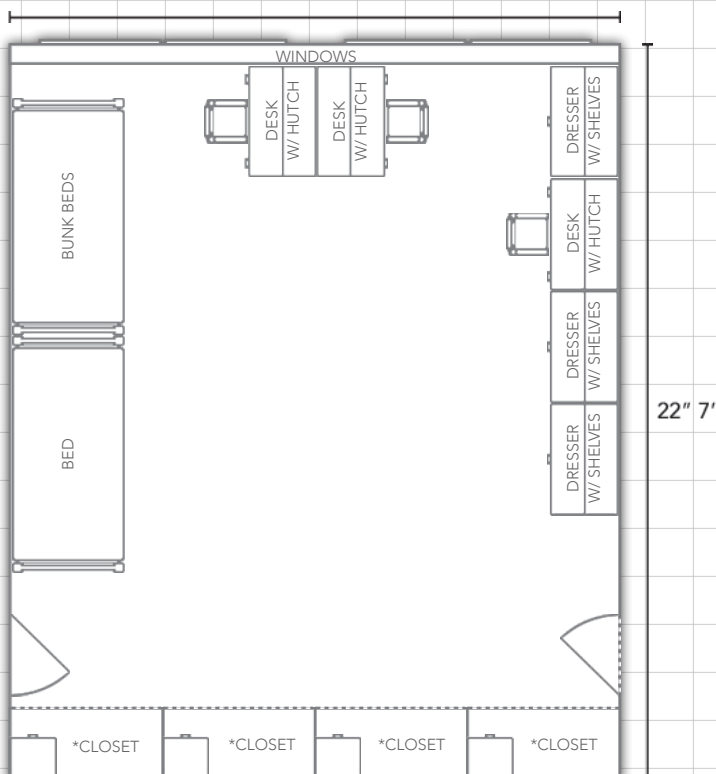
(Rooms 215, 216, 315, 316, 415, 416, 515, 516, 615, 616, 715, 716, 915 and 916)



Triple Room:

(Rooms 200, 300, 400, 500, 600, 700 and 900)

19' 2"



*Closets include an immovable chest of drawers

Department:



Bedding:

Bedding in all rooms measure 80" X 39" (x-long twin)

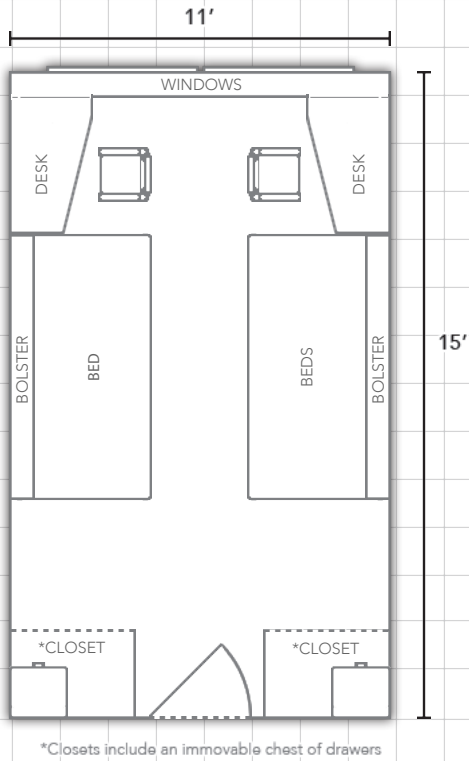
Furnishings:

Rooms are carpeted and feature stackable, loftable and bunkable furniture

Miscellaneous:

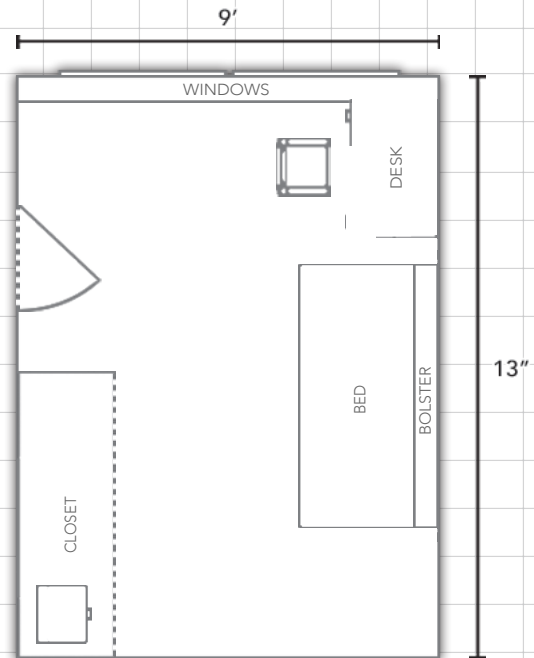
Layouts are not to scale

Double Room (Eighth Floor Only):



Physical Single Room (Eighth Floor Only):

(Rooms 815 and 816)



Department:



Bedding: Bedding in all rooms measure 80" X 39" (x-long twin)

Furnishings: All rooms on the 8th floor have tile floors.

Miscellaneous: Layouts are not to scale