

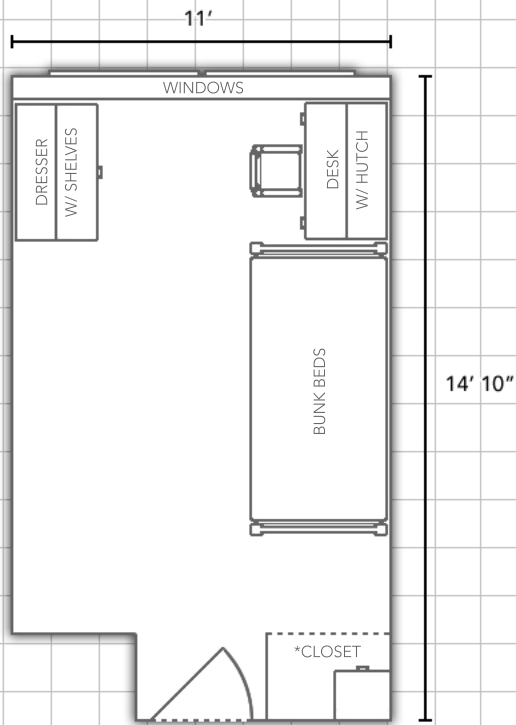
# THOMAS HALL

Information available at [WWW.EIU.EDU/HOUSING](http://WWW.EIU.EDU/HOUSING)



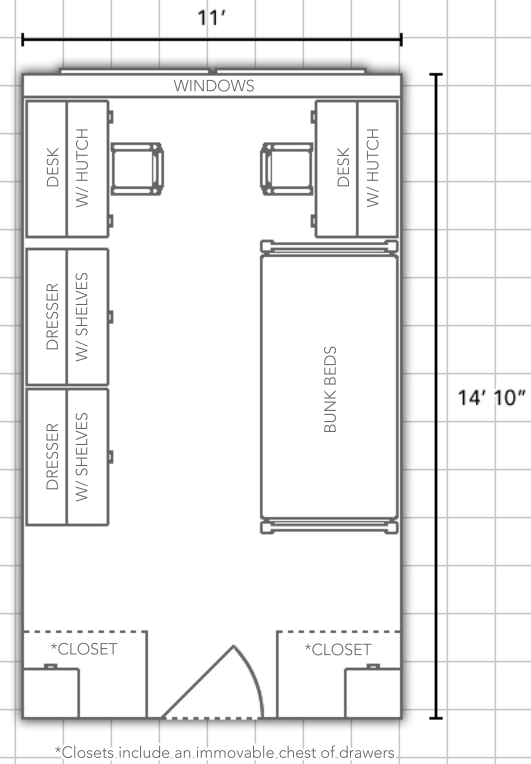
## Physical Single Room:

(Rooms 103, 152, 203, 252, 303, 352, 403 and 452)



\*Closet includes an immovable chest of drawers

## Double Room:



Department:



Bedding:

Bedding in all rooms measure  
80" X 39" (x-long twin)

Furnishings:

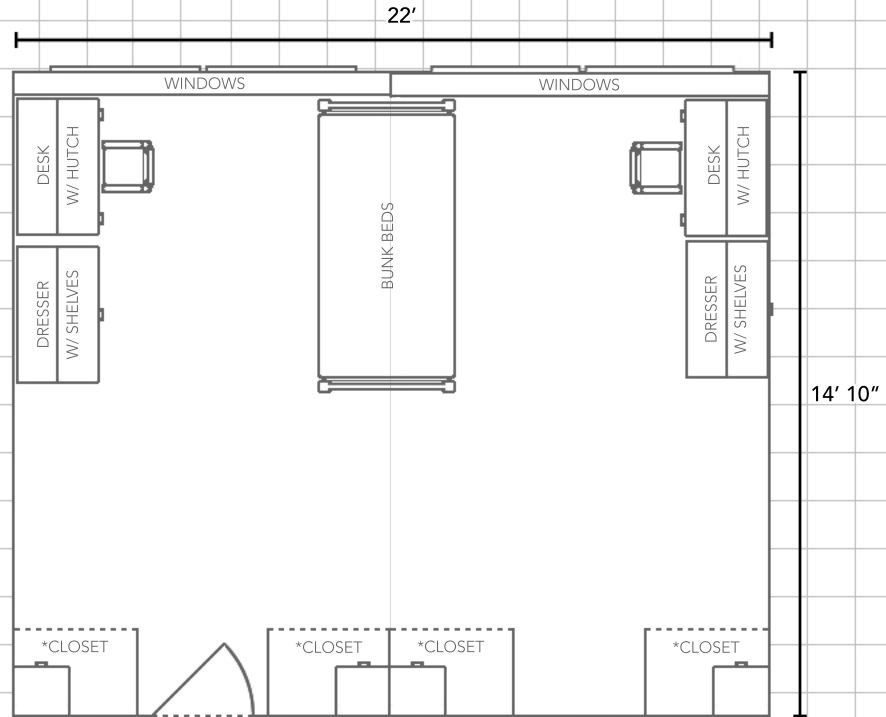
Rooms are carpeted and feature  
stackable, loftable and  
bunkable furniture

Miscellaneous:

*Layouts are not to scale*

## Deluxe Double Room:

(Rooms N114 and N118)



\*Closets include an immovable chest of drawers